



**HATHORN<sup>®</sup>**  
**INSPECTION CAMERAS**

**2024**

# **CATALOG**

**PROUDLY MANUFACTURED IN  
NORTH AMERICA**

1 (866) 428-2676



Hathorncorp.com





## What Our Customers Have To Say

***"I really can't say enough good things about Hathorn. The product is simply awesome. Compact, tough, easy to use, great all around quality. It works better than other cameras that cost twice as much."***

---

***"Our company has twenty-five Hathorn® camera systems that get used every day. As a contracting firm we have come to count on the reliability and performance of these systems to get the job done every time."***

---

***"By far Hathorn cameras are the best investment we made as a business! Far outshines the other cameras we have used in our careers."***

---

***"Being a full service septic company we have used a few other cameras and by far the Hathorn has been the best. The Wi-Fi reel allowed us to give the customer their own device to watch the inspection while we had our own at the same time giving the customer the best possible experience. Looking forward to our next reel to expand our business with Hathorn."***

## The Hathorn Warranty

***When you purchase a Hathorn inspection camera from us, or one of our authorized distributors, it comes with a 1-year warranty against manufacturer's defects. We stand behind everything we make and are dedicated to customer satisfaction, so if you have an issue with any Hathorn product we are here to help. Give us a call and we will try to help you by answering technical questions, connecting you with a service center or getting you the replacement parts you need.***

***We have service centers across the United States, Canada and Australia should you ever need to service your camera. You can access them by going to our website and locating the service center closest to you or by calling us at 1-866-HATHORN. Our factory-trained technicians will provide a quick, convenient solution for all your warranty and maintenance needs. As a truly North American manufacturer our commitment to you is that we have the parts you need in stock at all times. We recognize that downtime is painful and we will work to ensure you are back up and running as soon as possible.***



*Since 2003, Hathorn® has manufactured the toughest pipe and sewer inspection cameras on the market. Proudly designed and manufactured in North America. From California to Canada; Alaska to Australia; Hathorn cameras can tackle any climate and any job.*

*Our business is building inspection cameras for your business. Call us to find out how we can help your business grow through unmatched reliability, parts availability and product customization.*

# TABLE OF CONTENTS

<b>CAMERA SYSTEMS</b>	<b>1 - 14</b>
<b>LOCATORS &amp; TRANSMITTERS</b>	<b>15 - 16</b>
<b>PATCH CABLES</b>	<b>17</b>
<b>ACCESSORIES</b>	<b>18</b>
<b>CAMERA HEAD SKIDS</b>	<b>19 - 20</b>
<b>CAMERA HEADS</b>	<b>21</b>
<b>RETERM KITS</b>	<b>22</b>

## SOCIAL MEDIA LINKS







**The Hathorn® H12+ is in a class of its own with the brightest daylight-readable 12" LCD screen in the industry. It has almost three times the brightness of the leading brand providing stunning picture quality, high contrast and 8X digital "pan & zoom" technology revealing details missed by other pipe inspection cameras.**

**Available with Wi-Fi as an option, the H12+ has menus in three languages (English, French and Spanish), compatibility with all Hathorn reels past, present and future from 100- 600ft., unique on-screen job information bar and text overlay features, two sonde frequencies (512Hz & 640Hz) and industry-leading on-board file storage.**

**The H12+ comes standard with a 128Gb hard drive which is upgradeable to 512Gb allowing the user to save MPEG videos and JPEG screen shots to either the HDD or to a USB stick.**

**Powered by 18V Milwaukee® (or equivalent) batteries, the H12+ will run for over 4 hours on a single charge. Batteries sold separately.**



Light Weight  
9.5 lbs/4.5 kg



Screen Shot  
Function



Internal  
Hard Drive  
128GB or 512GB



Works with 18V  
Milwaukee® or  
Equivalent Batteries



Full Size  
Keyboard



Daylight Readable  
Display



Record to  
USB & HDD



Hathorn Info Bar



Camera LED  
Light Control



Industry-  
Leading Warranty

**PROUDLY DESIGNED AND MANUFACTURED IN NORTH AMERICA**

**HATHORNCORP.COM | SALES@HATHORNCORP.COM**

**North America: 1-866-HATHORN | International: 1-905-604-7040**

**GET A QUOTE**



### SPECIFICATIONS

#### Display

Size & Display	12" (30.7cm) impact-resistant LCD
Resolution & Brightness	XGA 1024 x 768 pixels with 1,300 cd/m2
Zoom	1X, 2X, 4X, 8X with digital zoom feature

#### Recording, Storage & Features

Recording Options	MPEG4 video (H.264 at 30 fps) & JPEG screenshot
Storage Options	USB, HDD or USB & HDD
USB Capacity	USB 2.0 up to 32Gb
Hard Drive Capacity	128Gb (standard) or 512Gb (upgrade)
Keyboard	Full-sized QWERTY with silicone cover
Camera Head LED	Dimming control 5% increments
Hathorn Info Bar	74 characters over 2 lines with time/date
Text Overlay	English, Spanish, French
Menu Languages	Integrated microphone and speaker
Footage Counter	Feet or meters with reset function
Sonde Frequencies	High power 512Hz or 640Hz
Reel Compatibility	All Hathorn reels (except Wi-Fi)

#### Power

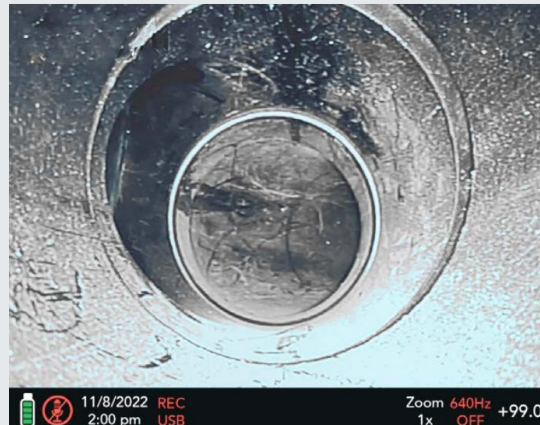
Battery (not incl.)	Only Milwaukee® M18 18V or equivalent
Battery Life	-4Hrs. using 3.0Ah
Battery Extender	Auto dimming & auto saving
AC/DC Adapter	12V-4.1A (included)

#### Weight & Dimensions

Weight without Battery	9.5lb (4.3Kg)
Dimensions (L x W x H)	15" x 12" x 5.5" (38cm x 30cm x 14cm)

#### Environmental

Water Resistance	IP65
Operating Temperature	14°F to 122°F (-10°C to 50°C)
Storage Temperature	4°F to 140°F (-20°C to 60°C)



**The Hathorn® Info Bar at the bottom of the screen allows you to see battery life, speaker function, time and date, recording file location, zoom, sonde frequency function and footage. The info bar is customizable - allowing you to put your company or client info at the bottom of the screen, recorded throughout the video. The newly designed, intuitive menus allow for a minimal learning curve. You are up and running in minutes.**

**PROUDLY DESIGNED AND MANUFACTURED IN NORTH AMERICA**

**HATHORNCORP.COM | SALES@HATHORNCORP.COM**

**North America: 1-866-HATHORN | International: 1-905-604-7040**

**GET A QUOTE**







**Hathorn® camera reels are designed to work with any Hathorn control module, past present or future. These rugged and durable camera reels come fitted with your choice of Hathorn self-levelling camera heads, all equipped with super-bright, cool running LEDs for optimal picture quality.**

**Butt-welded steel frame construction, stainless steel camera heads and your choice of cable size allow you to push further than ever before and remain in the field longer with Hathorn's legendary reliability.**

**Hathorn camera reels are trusted by plumbers, municipalities, general contractors, home inspectors, petrochemical companies, and mining engineers to deliver a clear, recordable video inspection every time the camera is used. Designed and manufactured in North America, with a full one-year warranty.**



For use with Hathorn  
Command Modules



Self-Levelling Camera  
Heads



200 ft to 600 ft of Push  
Rod



512Hz or 640Hz High  
Power Sonde



Industry-Leading  
Warranty

**PROUDLY DESIGNED AND MANUFACTURED IN NORTH AMERICA**

**HATHORNCORP.COM | SALES@HATHORNCORP.COM**  
**North America: 1-866-HATHORN | International: 1-905-604-7040**

**GET A QUOTE**



# HATHORN® CAMERA REELS

## STANDARD

### SPECIFICATIONS

#### Display

Size & Display	Compatible with all Hathorn control modules. H12+ recommended for best picture and options
----------------	--

#### Features

Sonde Frequency	High power 512Hz or 640Hz (available only with H12+ controller)
Push Rod	HDPE push rod with coax core - multiple lengths and thicknesses

#### Weight & Dimensions

Weight	See specific item in list to the right
Dimensions (L x W x H)	See specific item in list to the right

#### Weight & Dimensions

Water Resistance - Camera & Rod	IP67 to 60psi
Water Resistance - Battery Cradle	IP65
Water Resistance - Reel Hub	IP64
Operating Temperature	14°F to 122°F (-10°C to 50°C)
Storage Temperature	4°F to 140°F (-20°C to 60°C)



#### Extra Large

Catalog #	Camera Head	Self Leveling	Rod Length	Rod Size	Min. 90° Elbow	Weight	Max Pipe	Dimensions
XLR-5568-SL	1.68"	✓	500 ft.	5/8"	3"	90lbs.	12"	33" x 29" x 16"
XLR-5168-SL	1.68"	✓	500 ft.	1/2"	3"	75lbs.	12"	33" x 29" x 16"

#### Large

Catalog #	Camera Head	Self Leveling	Rod Length	Rod Size	Min. 90° Elbow	Weight	Max Pipe	Dimensions
LR-4168-SL	1.68"	✓	400 ft.	1/2"	3"	65 lbs.	12"	33" x 29" x 16"
LR-3168-SL	1.68"	✓	300 ft.	1/2"	3"	55 lbs.	12"	33" x 29" x 16"
LR-2168-SL	1.68"	✓	200 ft.	1/2"	3"	45 lbs.	12"	33" x 29" x 16"
LR-4143-SL	1.43"	✓	400 ft.	1/2"	3"	65 lbs.	10"	33" x 29" x 16"
LR-3143-SL	1.43"	✓	300 ft.	1/2"	3"	55 lbs.	10"	33" x 29" x 16"
LR-2143-SL	1.43"	✓	200 ft.	1/2"	3"	45 lbs.	10"	33" x 29" x 16"

#### Mid

Catalog #	Camera Head	Self Leveling	Rod Length	Rod Size	Min. 90° Elbow	Weight	Max Pipe	Dimensions
MR-2168-SL	1.68"	✓	200 ft.	1/2"	3"	42 lbs.	12"	29" x 18" x 15"
MR-2143-SL	1.43"	✓	200 ft.	1/2"	3"	42 lbs.	10"	29" x 18" x 15"
MR-2123-SL	1.23"	✓	200 ft.	0.400"	2"	42 lbs.	6"	29" x 18" x 15"

#### Mini

Catalog #	Camera Head	Self Leveling	Rod Length	Rod Size	Min. 90° Elbow	Weight	Max Pipe	Dimensions
MN-2123-SL	1.23"	✓	200 ft.	3/8"	2"	33 lbs.	6"	24" x 18" x 10"
MN-2100	1"	✗	200 ft.	3/8"	2"	33 lbs.	4"	24" x 18" x 10"

\*Straight View Cameras Available



PROUDLY DESIGNED AND MANUFACTURED IN NORTH AMERICA

HATHORNCORP.COM | SALES@HATHORNCORP.COM  
North America: 1-866-HATHORN | International: 1-905-604-7040

GET A QUOTE





**Hathorn® H7 systems come standard with a 7" daylight readable shatter resistant LCD monitor with 1,000 cd/m2 of brightness, making it the brightest monitor in its class.**

**Available with Wi-Fi as an option, the H7 has an on-board hard drive with 64Gb (upgradable to 128Gb) capacity and USB recording allowing the user to record MPEG4 video and JPEG screen shots.**

**The H7 is a complete system with your choice of rugged Hathorn camera heads and three different stiffnesses of push rod. These systems are compatible with 18V Milwaukee® (or equivalent) batteries for ultimate portability and over 5 hours of runtime on a single charge.**

**Portability is never an issue with the H7 as these lightweight units are only 45lbs. All H7s feature a footage counter, a 512Hz sonde and come equipped with 200ft. of premium cable and your choice of camera head.**

**These rugged systems are genuinely North American made with a butt-welded steel frame construction and feature military-grade faceplates and connectors.**



Screen Shot  
Function



Daylight  
Readable Display



Internal Hard Drive  
- 128Gb or 512Gb



Self-Levelling Camera  
Heads



Record to USB  
& HDD



512Hz High Power  
Sonde



200 ft of Push Rod



Works with 18V  
Milwaukee® or  
Equivalent Batteries



Industry-  
Leading  
Warranty

**PROUDLY DESIGNED AND MANUFACTURED IN NORTH AMERICA**

**HATHORNCORP.COM | SALES@HATHORNCORP.COM**

**North America: 1-866-HATHORN | International: 1-905-604-7040**

**GET A QUOTE**





## SPECIFICATIONS

### Display

Size & Display	7" (17.8cm) impact-resistant, daylight-readable LCD
Resolution & Brightness	1024 x 600 pixels with 1,000 cd/m2

### Recording, Storage & Features

Recording Options	MPEG4 video (H.264 at 30 fps) & JPEG screenshot
Storage Options	USB, HDD or USB & HDD
USB Capacity	USB 2.0 up to 32Gb
Hard Drive Capacity	64Gb (standard) or 128Gb (upgrade)
Menu Languages	English, Spanish, French
Footage Counter	Feet or meters - resettable
Sonde Frequencies	High power 512Hz
Push Rod	200 ft. of HDPE push rod with coax core

### Power

Battery (not incl.)	Only Milwaukee® M18 18V or equivalent
Battery Life	~5Hrs. using 3.0Ah
Battery Extender	Auto dimming & auto saving
AC/DC Adapter	12V - 4.1A (included)

### Environmental

Weight without Battery	45lb (20.4Kg)
Dimensions (L x W x H)	19" x 15.5" x 29.5" (48cm x 39cm x 75cm)

### Weight & Dimensions

Water Resistance	IP65
Operating Temperature	14°F to 122°F (-10°C to 50°C)
Storage Temperature	-4°F to 140°F (-20°C to 60°C)



Catalog #	Camera Head	Self Leveling	Rod Length	Rod Size	Min. 90° Elbow	Max Pipe Well Lit
H7-2168-SL	1.68"	✓	200 ft.	1/2"	3"	12"
H7-2143-SL	1.43"	✓	200 ft.	1/2"	3"	10"
H7-2123-SL	1.23"	✓	200 ft.	0.400"	2"	6"
H7-2100	1"	✗	200 ft.	3/8"	1.5"	4"

\*Straight View Cameras Available



**PROUDLY DESIGNED AND MANUFACTURED IN NORTH AMERICA**



# HATHORN® H5

## CAMERA SYSTEM

**DESIGNED  
SPECIALLY FOR  
THE TOOL RENTAL  
INDUSTRY**



*The Hathorn® H5 has been specially designed for the rental industry with ruggedness and simplicity in mind. The H5 comes with a metal-guarded 5.5" daylight- readable shatter-resistant LCD monitor with 1,000 cd/m2 of brightness, making it the brightest monitor in the rental industry. It offers USB video recording with a screen shot feature allowing the user to record MPEG4 video and JPEGs to a portable USB drive.*

*The H5 is a complete system with your choice of rugged Hathorn camera heads and three different stiffnesses of push rod. These systems are compatible with 18V Milwaukee® (or equivalent) batteries for ultimate portability and over 5 hours of runtime on a single charge.*

*Portability is never an issue with the H5 as these lightweight units are only 45lbs.*

*All H5s feature a footage counter and a 512Hz sonde. All Hathorn products are North American made with butt-welded steel frame construction and feature military-grade faceplates and connectors.*

*Hathorn products have been trusted by rental centers across the country for over a decade to deliver strong return on investment and unmatched durability.*



Screen Shot  
Function



Daylight Readable  
Display



200 ft of Push Rod



Self-Levelling Camera  
Heads



Record to USB



512Hz High Power  
Sonde



Works with 18V  
Milwaukee or  
Equivalent  
Batteries



Industry-  
Leading  
Warranty

**PROUDLY DESIGNED AND MANUFACTURED IN NORTH AMERICA**

**HATHORNCORP.COM | SALES@HATHORNCORP.COM**

**North America: 1-866-HATHORN | International: 1-905-604-7040**

**GET A QUOTE**



## SPECIFICATIONS

### Display

Size & Display	5.5" (14cm) impact-resistant, daylight-readable LCD
Resolution & Brightness	1024 x 600 pixels with 1,000 cd/m2

### Recording, Storage & Features

Recording Options	MPEG4 video (H.264 at 30 fps) & JPEG screenshot
Storage Options	USB
USB Capacity	USB 2.0 up to 32Gb
Menu Languages	English, Spanish, French
Footage Counter	Feet or meters - resettable
Sonde Frequencies	High power 512Hz
Push Rod	200 ft. of HDPE push rod with coax core

### Power

Battery (not incl.)	Only Milwaukee® M18 18V or equivalent
Battery Life	~5Hrs. using 3.0Ah
Battery Extender	Auto dimming & auto saving
AC/DC Adapter	12V - 4.1A (included)

### Weight & Dimensions

Weight without Battery	45lb (20.4Kg)
Dimensions (L x W x H)	19" x 15.5" x 29.5" (48cm x 39cm x 75cm)

### Environmental

Water Resistance	IP65
Operating Temperature	14°F to 122°F (-10°C to 50°C)
Storage Temperature	-4°F to 140°F (-20°C to 60°C)



Catalog #	Camera Head	Self Leveling	Rod Length	Rod Size	Min. 90° Elbow	Max Pipe Well Lit
H5-2168-SL	1.68"	✓	200 ft.	1/2"	3"	12"
H5-2143-SL	1.43"	✓	200 ft.	1/2"	3"	10"
H5-2123-SL	1.23"	✓	200 ft.	0.400"	2"	6"
H5-2100	1"	✗	200 ft.	3/8"	1.5"	4"

\*Straight View Cameras Available

PROUDLY DESIGNED AND MANUFACTURED IN NORTH AMERICA







**The Hathorn® H2 comes with a 7" shatter-resistant LCD monitor, 200 ft. of premium push rod and your choice of straight-view or self-leveling camera heads, all with cool running, super-bright LED lights. The H2 also includes an on-screen footage counter in feet and meters, as well as a 512Hz high power sonde control.**

**Being aimed at the budget conscious user who wants a robust, easy-to-use system, without paying for extra options, the H2 camera system does not have a recording option. The H2 is an entry level inspection camera offering the same rugged quality and portability of our more expensive models. All Hathorn products are compatible with 18V Milwaukee® batteries offering the H2 over 6 hours of runtime on a single charge.**

**Trusted by plumbers and contractors to deliver rugged dependability and portability. Designed and manufactured in North America, with a full one-year warranty.**



Self-Levelling  
Camera Heads



Works with 18V  
Milwaukee® or  
Equivalent  
Batteries



200 ft of Push Rod



512Hz High Power  
Sonde



Industry-  
Leading  
Warranty

**PROUDLY DESIGNED AND MANUFACTURED IN NORTH AMERICA**

**HATHORNCORP.COM | SALES@HATHORNCORP.COM**

**North America: 1-866-HATHORN | International: 1-905-604-7040**

**GET A QUOTE**



## SPECIFICATIONS

### Display

Size & Type	7" (17.8cm) impact-resistant LCD
Resolution & Brightness	1024 x 600 pixels with 1,000 cd/m2

### Recording, Storage & Features

Footage Counter	Feet or meters - resettable
Sonde Frequencies	High power 512Hz
Push Rod	200 ft. of HDPE push rod with coax core

### Power

Battery (not incl.)	Only Milwaukee® M18 18V or equivalent
Battery Life	~6Hrs. using 3.0Ah
AC/DC Adapter	12V - 4.1A (included)

### Weight & Dimensions

Weight without Battery	45lb (20.4Kg)
Dimensions (L x W x H)	19" x 15.5" x 29.5" (48cm x 39cm x 75cm)

### Environmental

Water Resistance	IP65 when the lid is closed
Operating Temperature	14°F to 122°F (-10°C to 50°C)
Storage Temperature	-4°F to 140°F (-20°C to 60°C)



	Camera Head	Self Leveling	Rod Length	Rod Size	Min. 90° Elbow	Max Pipe Well Lit
H2-2168-SL	1.68"	✓	200 ft.	1/2"	3"	12"
H2-2143-SL	1.43"	✓	200 ft.	1/2"	3"	10"
H2-2123-SL	1.23"	✓	200 ft.	0.400"	2"	6"
H2-2100	1"	✗	200 ft.	3/8"	1.5"	4"

\*Straight View Cameras Available



**PROUDLY DESIGNED AND MANUFACTURED IN NORTH AMERICA**





**Hathorn® Wi-Fi camera reels offer the convenience of streaming video inspections directly to two Apple or Android mobile devices at the same time using our free Hathorn app. Allows the user to take screen shots, record videos and make voice commentary. Save videos to your phone, email to your clients or attach to your route management software seamlessly.**

**All Hathorn cameras are portable and can be powered by external 18V Milwaukee® or equivalent batteries (not included) offering over 12 hours of run time on a single 3.0Ah battery. Batteries are inserted into the near indestructible Hathorn hub. No wires, no external battery cradles, just solid North American engineering.**

**All Wi-Fi reels feature a footage counter and a 512Hz sonde. Like all Hathorn products, they are genuinely North American made with a butt-welded steel frame construction and made with industry-leading HDPE premium cables.**



Screen Shot  
Function



Wi-Fi Reel for use  
with Phone or  
Tablet



Stream & Record to  
Mobile Device



Works with 18V  
Milwaukee or  
Equivalent  
Batteries



200 ft to 400 ft of  
Push Rod



512Hz High Power  
Sonde



Over 12 hrs of  
Runtime on a  
Single Charge



Self-Levelling  
Camera Heads



Industry-  
Leading  
Warranty

**PROUDLY DESIGNED AND MANUFACTURED IN NORTH AMERICA**

**HATHORNCORP.COM | SALES@HATHORNCORP.COM**

**North America: 1-866-HATHORN | International: 1-905-604-7040**

**GET A QUOTE**





## SPECIFICATIONS

### Display

Size & Type	Dependent upon Apple/Android Device
-------------	-------------------------------------

### Recording, Storage & Features

Recording Options	MPEG4
Screen Shot	JPEG
File Storage	Mobile Device, cloud or USB
Footage Counter	Feet or meters - resettable
Sonde Frequency	512Hz
Push Rod	HDPE - 200 ft to 400 ft / 3/8" to 5/8"
Start Up Time	~ 15 seconds

### Power

Battery (not incl.)	Only Milwaukee® M18 18V or equivalent
Battery Life	~ 12Hrs. using 3.0Ah
AC/DC Adapter	12V - 4.1A (included)

### Environmental

Water Resistance - Camera & Rod	IP68 to 60psi
Water Resistance - Reel Hub	IP65
Operating Temperature	14°F to 122°F (-10°C to 50°C)
Storage Temperature	-4°F to 140°F (-20°C to 60°C)
Wi-Fi Frequency	IEEE802.11b/g/n



#### Large

Catalog	Camera Head	Self Leveling	Rod Length	Rod Size	Min. 90° Elbow	Weight	Max Pipe	Dimensions
WLR-4168-SL	1.68"	✓	400 ft.	1/2"	3"	65 lbs.	12"	33" x 29" x 16"
WLR-3168-SL	1.68"	✓	300 ft.	1/2"	3"	55 lbs.	12"	33" x 29" x 16"
WLR-2168-SL	1.68"	✓	200 ft.	1/2"	3"	45 lbs.	12"	33" x 29" x 16"
WLR-4143-SL	1.43"	✓	400 ft.	1/2"	3"	65 lbs.	10"	33" x 29" x 16"
WLR-3143-SL	1.43"	✓	300 ft.	1/2"	3"	55 lbs.	10"	33" x 29" x 16"
WLR-2143-SL	1.43"	✓	200 ft.	1/2"	3"	45 lbs.	10"	33" x 29" x 16"

#### Mid

Catalog	Camera Head	Self Leveling	Rod Length	Rod Size	Min. 90° Elbow	Weight	Max Pipe	Dimensions
WMR-2168-SL	1.68"	✓	200 ft.	1/2"	3"	42 lbs.	12"	29" x 18" x 15"
WMR-2143-SL	1.43"	✓	200 ft.	1/2"	3"	42 lbs.	10"	29" x 18" x 15"
WMR-2123-SL	1.23"	✓	200 ft.	0.400"	2"	42 lbs.	6"	29" x 18" x 15"

#### Mini

Catalog	Camera Head	Self Leveling	Rod Length	Rod Size	Min. 90° Elbow	Weight	Max Pipe	Dimensions
WMN-2123-SL	1.23"	✓	200 ft.	3/8"	2"	33 lbs.	6"	24" x 18" x 10"
WMN-2100	1	✗	200 ft.	3/8"	1.5"	33 lbs.	4"	24" x 18" x 10"

\*Straight View Cameras Available

PROUDLY DESIGNED AND MANUFACTURED IN NORTH AMERICA

HATHORNCORP.COM | SALES@HATHORNCORP.COM

North America: 1-866-HATHORN | International: 1-905-604-7040

GET A QUOTE





**Micron camera reels can be used with either Hathorn® control modules (H12+ recommended), or with your own mobile Apple/Android device, should you opt for the Wi-Fi option. The Wi-Fi option is a standalone camera system that allows live streaming and recording to up to three devices at the same time using Hathorn's free app. It is powered by an external Milwaukee® 18V or equivalent battery (sold separately), which can last over 12 hours.**

**Micron reels are trusted by plumbers, general contractors, and home inspectors to deliver crystal clear, recordable video inspections of small pipes 1.5" to 3". These reels offer a butt-welded steel frame construction and 100 ft of premium 1/4" push rod. Both styles of reel come equipped with 1" straight view camera heads fitted with super bright, cool running LEDs for optimal picture quality.**

**These features give Micron reels the ultimate in portability. Designed and manufactured in North America, with a full one-year warranty.**



100 ft of Push Rod



512Hz High Power Sonde



**Standard Version**

To be paired with Hathorn H12+ Controller



Works with 18V Milwaukee or Equivalent Batteries



Industry-Leading Warranty



**Wi-Fi Version**

To be paired with Phone or Tablet

**PROUDLY DESIGNED AND MANUFACTURED IN NORTH AMERICA**

**HATHORNCORP.COM | SALES@HATHORNCORP.COM**

**North America: 1-866-HATHORN | International: 1-905-604-7040**

**GET A QUOTE**



## Micron Wi-Fi Specifications

### Display

Size & Type	Dependent upon Apple/Android device
-------------	-------------------------------------

### Recording, Storage & Features

Video Recording	MPEG4
Screen Shot	JPEG
File Storage	Mobile device, cloud or USB
Footage Counter	Feet or meters, resettable
Sonde Frequency	512Hz
Push Rod	HDPE - 100 ft. of 1/4"
Start Up Time	~15 seconds

### Power

Battery (not incl.)	Only Milwaukee® M18 18V or equivalent
Battery Life	12 hrs. using 3.0Ah (sonde off)
AC/DC Adapter	12V - 4.1A (included)
Wi-Fi Frequency	IEEE802.11b/g/n

## Standard Micron Specifications

### Display

Size & Type	Compatible with All Hathorn control modules
-------------	---

### Features

Sonde Frequency	High power 512Hz or 640Hz (available only with H12+ controller)
Push Rod	HDPE - 100 ft. of 1/4"
Recording, Storage & Power	Please refer to H12+ specifications

### Weight & Dimensions

Weight without Battery	15lbs. (6.8Kg) without battery
Dimensions (L x W x H)	16" x 12" x 10"

### Environmental

Water Resistance - Camera and Rod	IP67 to 60psi
Water Resistance - Battery Cradle	IP66
Water Resistance - Reel Hub	IP66
Operating Temperature Storage	14°F to 122°F (-10°C to 50°C)
Temperature	-4°F to 140°F (-20°C to 60°C)

### Standard Reel



### Wi-Fi Reel



Catalog #	Camera Head	Wi-Fi	Self Leveling	Rod Length	Rod Size	Max Pipe	Min. 90° Elbow	Weight	Dimensions
MC-1100	1"	✗	✗	100 ft.	1/4"	3"	1.5"	15 lbs.	16" x 12" x 10"
MC-1078	7/8"	✗	✗	100 ft.	1/4"	3"	1.5"	15 lbs.	16" x 12" x 10"
WMC-1100	1"	✓	✗	100 ft.	1/4"	3"	1.5"	16 lbs.	16" x 12" x 10"
WMC-1078	7/8"	✓	✗	100 ft.	1/4"	3"	1.5"	16 lbs.	16" x 12" x 10"



PROUDLY DESIGNED AND MANUFACTURED IN NORTH AMERICA

HATHORNCORP.COM | SALES@HATHORNCORP.COM

North America: 1-866-HATHORN | International: 1-905-604-7040

GET A QUOTE







**Made in the USA, the Hathorn Utili-Track sonde and cable locator allows users to adapt the locator to their specific needs. The Utili-Track offers best-in-class 512Hz sonde and line trace locating indicating direction of the sonde and it's depth. Ergonomically designed and balanced, it provides depth reading of up to 25 feet and current measurement to help identify target utilities and sondes in crowded areas.**

**A large, high-contrast LCD screen offers a visible signal response. Automatic depth, automatic current, and proximal directional arrows are readable in the brightest sunshine or backlit for viewing in dimmer conditions.**

**The Utili-Track can locate multiple active frequencies with a minimum of interference while maintaining the ability to continue locating past faults and around conduit bends. Passive frequencies identify "live" and charged lines by their naturally occurring electromagnetic fields. The Utili-Track offers multiple passive frequencies -- 50Hz, 60Hz, Radio Frequency, Cathodic Protection Rectifier & CATV -- allowing line locating without the use of a transmitter.**



Multi-frequency  
locator including  
512Hz Sonde



Light Weight  
4.2 lbs/1.9 kg



Comes with 6  
C-cell batteries



Industry-Leading  
Warranty



Ultra-clear LCD  
screen with depth  
display

**PROUDLY DESIGNED AND MANUFACTURED IN NORTH AMERICA**

**HATHORNCORP.COM | SALES@HATHORNCORP.COM**

**North America: 1-866-HATHORN | International: 1-905-604-7040**

**GET A QUOTE**



**HATHORN® LOCATOR****UTILI-TRACE**

**Made in the USA, the Hathorn Utili-Trace transmitter offers multi-frequency coupled induction ranging from 8 kHz to 118 kHz including the traditional 512Hz frequency, and automatic impedance matching for direct connections. This 3-watt transmitter has the ability to simultaneously apply two frequencies to a utility.**

**From one transmitter setting, the user can locate the main line as well as other services by "lighting up" the entire site. This set-and-forget feature saves you time and money by reducing the need to repeatedly relocate the transmitter. All functions are accessed via weather-proof membrane buttons and both user input and transmitter status are verified with audible responses.**



Operates on low, medium and high frequency ranges



Light Weight  
2.2 lbs/1 kg



Comes with 8 C-cell batteries



Multi- frequency



Industry-Leading  
Warranty

**PROUDLY DESIGNED AND MANUFACTURED IN NORTH AMERICA**

**HATHORNCORP.COM | SALES@HATHORNCORP.COM**  
**North America: 1-866-HATHORN | International: 1-905-604-7040**

**GET A QUOTE**



## PATCH CABLES

*Hathorn manufactures its connection cables to ensure a reliable signal between camera reel and monitor for the life of the product.*



### **PC-CR12**

*Patch cable connecting  
12 pin reel to 12 pin  
controller  
(Current models)*



### **PC-C12R10**

*Patch cable connecting  
new 12 pin controller  
to older 10 pin reel*



### **PC-C10R12**

*Patch cable connecting  
older 10 pin controller  
to newer 12 pin reel*



### **PC-CR12G**

*Patch cable for keyhole  
gas camera system*



### **PC-CR10**

*Patch cable connecting  
older 10 pin reel to older  
10 pin controller*

**PROUDLY DESIGNED AND MANUFACTURED IN NORTH AMERICA**

**HATHORNCORP.COM | SALES@HATHORNCORP.COM**

**North America: 1-866-HATHORN | International: 1-905-604-7040**

**GET A QUOTE**





## ACCESSORIES

*Controller mounts, power supplies, camera head skids and brake handles - Hathorn carries all the accessories you need to upgrade and maintain your camera system.*



**PS-12V**  
12V power supply



**10105-H12**  
Mounting bracket  
complete with pin &  
shaft for large and  
extra large reels



**90204**  
Pin for reel mounting  
bracket



**10128-H12**  
Shaft for controller  
mounting bracket



**10119**  
Small brake handle for  
mini/mid reels



**WHEEL6**  
6" X 1 1/2" wheel  
for H2 and H7



**10120**  
Large brake handle for  
standard reel



**WHEEL8**  
8" x 1 3/4"  
wheel



**10121**  
Rubber foot for reel



**WHEEL7**  
7" wheel in black

PROUDLY DESIGNED AND MANUFACTURED IN NORTH AMERICA



## CAMERA HEAD SKIDS

*Skids are available for all Hathorn camera heads. Skids are used to protect your camera head from damage and also to raise the head out of standing water and center the camera in the pipe. It is recommended that users always use a skid on their camera heads so as to protect their investment.*



**SK-168LSV**  
*P-trap skid for 1.68"  
camera heads*



**SK-143SL**  
*P-trap skid for 1.43"  
self leveling camera  
head*



**SK-168GR**  
*3" grooved skid for 1.68"  
camera heads*



**SK-143GR**  
*3" grooved skid for 1.43"  
camera heads*



**SK-143SV**  
*P-trap skid for 1.43"  
straight view camera  
head*



**SK-123SV**  
*P-trap skid for 1.23"  
straight view camera  
head*

PROUDLY DESIGNED AND MANUFACTURED IN NORTH AMERICA



## CAMERA HEAD SKIDS



**SK-1235L**  
P-trap skid for 1.23"  
mini self-leveling  
camera head



**SK-1GR**  
Grooved skid for micron  
1" camera head



**SK-123TOW**  
Tow skid for 1.23"  
camera head



**SK-RSL**  
Universal roller skid for  
1.68" or 1.43" camera  
head for 6" - 14" pipes



**SK-RSMN**  
Mini roller skid for 1.23"  
camera head for 4" - 6"  
pipes

PROUDLY DESIGNED AND MANUFACTURED IN NORTH AMERICA





## CAMERA HEADS



**CH-168SV**  
1.68" straight view  
camera head - stainless  
steel



**CH-168SL**  
1.68" self levelling  
camera head - stainless  
steel



**CH-168SL(AL)**  
1.68" straight view  
camera head - aluminum



**CH-143SV**  
1.43" straight view  
camera head - stainless  
steel



**CH-143SL**  
1.43" self levelling  
camera head - stainless  
steel



**CH-123SV**  
1.23" straight view  
camera head - stainless  
steel



**CH-123SL**  
1.23" self levelling  
camera head - stainless  
steel



**CH-1SV**  
1" straight view  
camera head - stainless  
steel \*Please specify if Wi-Fi  
camera is needed

## CAMERA HEAD EXCHANGE PROGRAM

Hathorn created the camera head exchange program because we understand that downtime waiting for repair of your tools can be costly. Being an owner of a Hathorn camera means you are automatically enrolled in the camera head exchange program for the life of the camera. Should you ever need to replace or repair your camera head you can purchase a brand new one, directly from us or any of our dealers, for a deeply discounted price. The old head must be returned to us to qualify for the discount and the head must be in rebuildable condition.

For full program details including pricing please visit our website at [hathorncorp.com/cameraheadexchange](http://hathorncorp.com/cameraheadexchange).

PROUDLY DESIGNED AND MANUFACTURED IN NORTH AMERICA

[HATHORNCORP.COM](http://HATHORNCORP.COM) | [SALES@HATHORNCORP.COM](mailto:SALES@HATHORNCORP.COM)

North America: 1-866-HATHORN International: 1-905-604-7040

GET A QUOTE



## RETERM KITS



### **RT-LR**

*Standard kit for 1/2"*



### **RT-LG (0.400)**

*Standard kit for .400"  
mid reel*



### **RT-LR (5/8)**

*Standard kit for 5/8"*



### **RT-MN (0.400)**

*Standard kit for .400"  
mini reel*



### **RT-MN**

*Standard kit for 3/8"  
mini reel*



### **RT-MC (3/8)**

*Standard kit for 3/8"  
micron*



### **RT-MC**

*Standard kit for 1/4"  
micron*

## ABOUT HATHORN'S RETERM KITS

Getting a reterm done on a Hathorn camera is easy because we're focused on giving our customers options and value on parts and services. Either visit one of our repair centers or order the parts from us directly. Unlike many camera manufacturers, we include a new sonde in every reterm kit. This ensures your sonde works when it is supposed to and doesn't require you to pay for a part that should be included every time.

PROUDLY DESIGNED AND MANUFACTURED IN NORTH AMERICA

[HATHORNCORP.COM](http://HATHORNCORP.COM) | [SALES@HATHORNCORP.COM](mailto:SALES@HATHORNCORP.COM)

North America: 1-866-HATHORN | International: 1-905-604-7040

GET A QUOTE





## REPAIR CENTERS

***If you need us, we're always close! We have a network of Authorized Service Centers and Repair Dealers throughout the United States, Canada and Australia. Contact them for plumbing and drains camera service or repair.***

**To get more specific location information,  
please visit**

**[www.hathorncorp.com/repaircentres](http://www.hathorncorp.com/repaircentres)**







HATHORN CORPORATION  
480 HOOD ROAD, UNIT 5  
MARKHAM, ONTARIO  
L3R 9Z3 CANADA  
HATHORNCORP.COM  
1 (866) 428-4676

HATHORN USA  
739 NORTH WILSON ROAD  
COLUMBUS, OHIO  
43204 USA  
HATHORNCORP.COM  
1 (866) 428-4676

1 (866) HATHORN



sales@hathorncorp.com



FIND YOUR LOCAL DEALER



LEAVE US A REVIEW





**HATHORN<sup>®</sup>**  
**INSPECTION CAMERAS**



HATHORN CORPORATION  
480 HOOD ROAD, UNIT 5  
MARKHAM, ONTARIO  
L3R 9Z3 CANADA  
HATHORNCORP.COM  
1 (866) 428-4676



HATHORN USA  
739 NORTH WILSON ROAD  
COLUMBUS, OHIO  
43204 USA  
HATHORNCORP.COM  
1 (866) 428-4676