

# HATHORN H12+

**CONTROL MODULE**



**Get A Quote**

**PROUDLY DESIGNED AND MANUFACTURED IN NORTH AMERICA**



Light Weight  
9.5 lbs/4.5 kg



Screen Shot  
Function



Internal Hard  
Drive 128GB  
or 512GB



Works with 18V  
Milwaukee® or  
Equivalent  
Batteries



Full Size  
Keyboard



Daylight  
Readable  
Display



Record to  
USB & HDD



Hathorn  
Info Bar



Camera LED  
Light Control



Industry-  
Leading  
Warranty

The Hathorn® H12+ is in a class of its own with the brightest daylight-readable 12" LCD screen in the industry. It has almost three times the brightness of the leading brand providing stunning picture quality, high contrast and 8X digital "pan & zoom" technology revealing details missed by other pipe inspection cameras.

Available with Wi-Fi as an option, the H12+ has menus in three languages (English, French and Spanish), compatibility with all Hathorn reels past, present and future from 100-500ft., unique on-screen job information bar and text overlay features, two sonde frequencies (512Hz & 640Hz) and industry-leading on-board file storage.

The H12+ comes standard with a 128Gb hard drive which is upgradeable to 512Gb allowing the user to save MPEG videos and JPEG screen shots to either the HDD or to a USB stick. This offers the user over 100 hours of recording capability or over 400 hours with the upgraded 512Gb HDD.

Powered by 18V Milwaukee® (or equivalent) batteries, the H12+ will run up to 4 hours on a single charge. Batteries sold separately.

# HATHORN H12+

**CONTROL MODULE**

**PROUDLY DESIGNED AND MANUFACTURED IN NORTH AMERICA**

## Specifications

### Display

Size & Type	12" (30.7cm) impact-resistant LCD
Resolution & Brightness	XGA 1024 x 768 pixels with 1,300 cd/m2
Zoom	1X, 2X, 4X, 8X with digital pan feature

### Recording, Storage & Features

Recording Options	MPEG4 video (H.264 at 30 fps) & JPEG screenshot
Storage Options	USB, HDD or USB & HDD
USB Capacity	USB 2.0 up to 32Gb
Hard Drive Capacity	128Gb (standard) or 512Gb (upgrade)
Keyboard	Full-sized QWERTY with silicone cover
Camera Head LED	Dimming control 5% increments
Hathorn Info Bar	74 characters over 2 lines with time/date
Text Overlay	8 Pages - save, recall, hide, delete
Menu Languages	English, Spanish, French
Audio	Integrated microphone and speaker
Footage Counter	Feet or meters with reset function
Sonde Frequencies	High power 512Hz or 640Hz
Reel Compatibility	All Hathorn reels (except Wi-Fi)

### Power

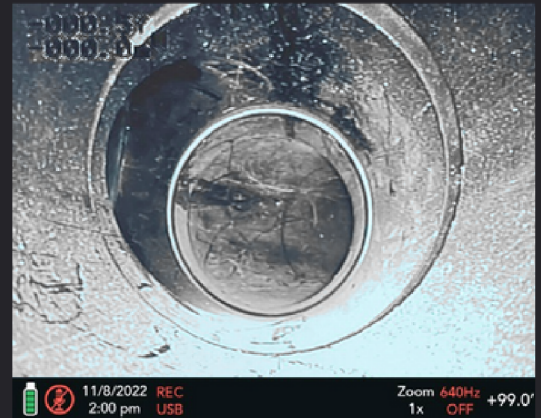
Battery (not incl.)	Only Milwaukee® M18 18V or equivalent
Battery Life	~4Hrs. using 3.0Ah
Battery Extender	Auto dimming & auto saving
AC/DC Adapter	12V - 4.1A (included)

### Weight & Dimensions

Weight without Battery	9.5lb (4.3Kg)
Dimensions (L x W x H)	15" x 12" x 5.5" (38cm x 30cm x 14cm)

### Environmental

Water Resistance	IP65
Operating Temperature	14°F to 122°F (-10°C to 50°C)
Storage Temperature	-4°F to 140°F (-20°C to 60°C)



The Hathorn Info Bar at the bottom of the screen allows you to see battery life, speaker function, time and date, recording file location, zoom, sonde frequency/function and footage. The info bar is customizable - allowing you to put your company or client info at the bottom of the screen, recorded throughout the video. The newly designed, intuitive menus allow for a minimal learning curve. You are up and running in minutes.



**North America 1-866-HATHORN**

**International 1-905-604-7040**

[hathorncorp.com](http://hathorncorp.com) | [sales@hathorncorp.com](mailto:sales@hathorncorp.com)